



## At A Glance

### Project:

Construction and Completion of Second 300m of CT8 Wharf, Access Bridges and Associated Works at West Ports, Pulau Indah, Port Klang

### Owner:

West Port Holdings Berhad

### Client:

Putra Perdana Construction Sdn Bhd

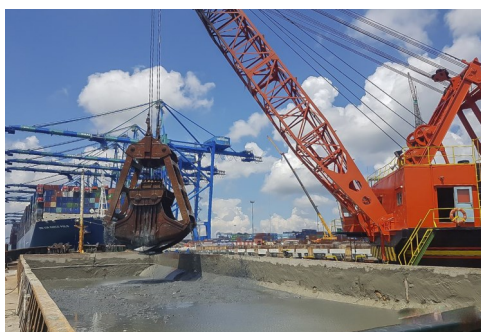
### Contract Sum:

RM 3,405,750.00

### Contract Period:

Phase 1: 08.06.2016—18.06.2016

Phase 2: 17.03.2017—18.05.2017



## P097 : Capital Dredging Works at West Port

### Dredging Works

With the current quay length of 3.2km, which includes 5 container terminals, Westport are able to handle up to 7.5mil TEUs yearly. The jetty at Westport Terminal is an important logistic factor in the daily business processes. Therefore, its economic progress has been significantly influenced by the port activities in its area. In these regards, an expansion to further container terminals are required in order to allow a continuation of jetty operations at the Terminal.

### Design Parameters:

Design Depth : -17.5mCD

Disposal Location Distance : 21 nautical miles

Dredge Quantity : 140,000 m<sup>3</sup> (Provisional)

### Vessel Deployed:

No.	Equipment	Capacity	Quantity
1	Grab Dredger	13m <sup>3</sup>	1
2	Non-propelled Split Hopper Barge	1,000m <sup>3</sup> & 1,280m <sup>3</sup>	2
3	Self-propelled Split Hopper Barge	1,000m <sup>3</sup>	1
4	Tug Boat	1,000bhp & 1,200 bhp	2
5	Anchor Handling Tug	5T	1

